

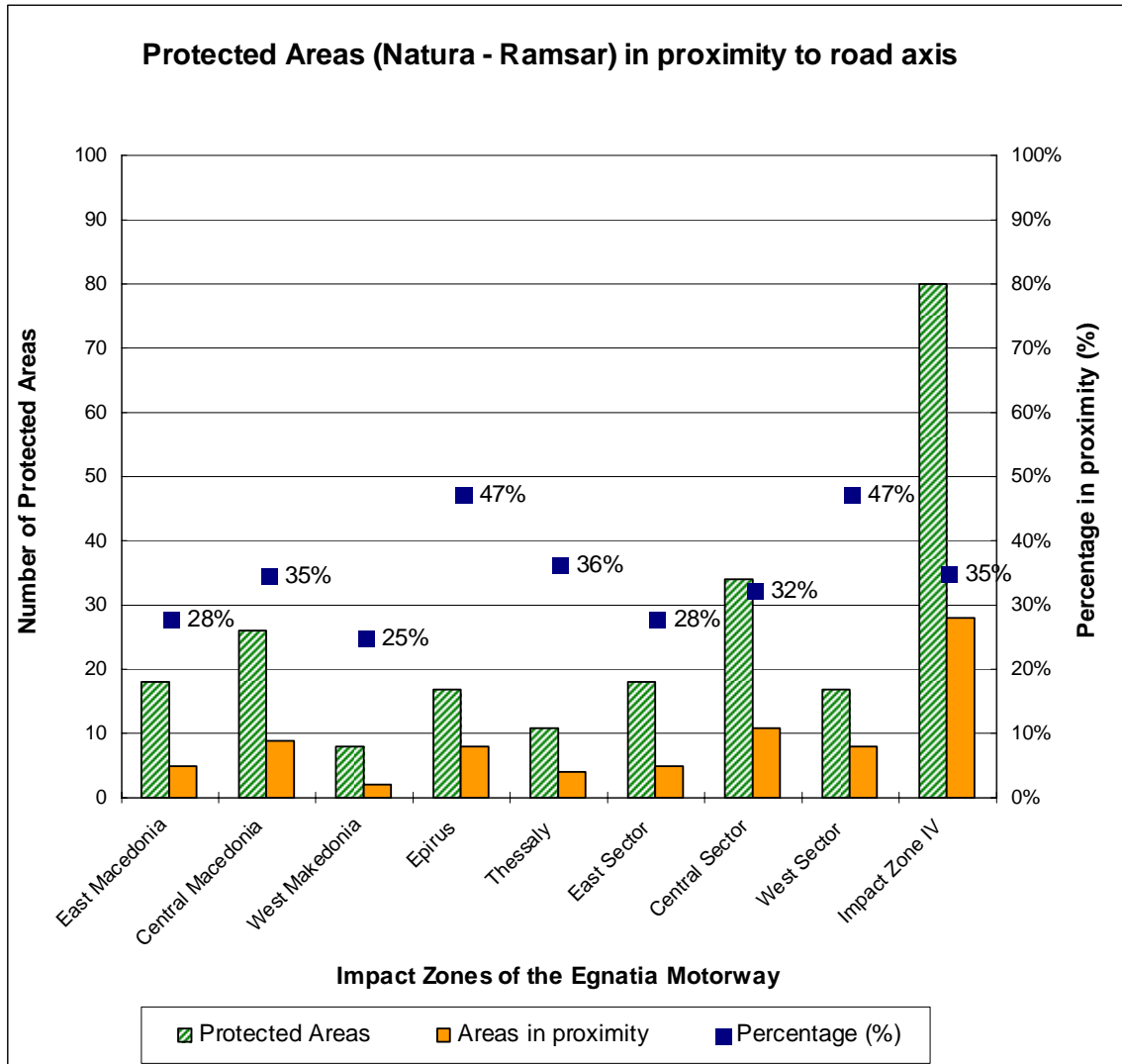
RESULTS FACT SHEET
ENV08: PROXIMITY TO PROTECTED AREAS
DEFINITION - SCOPE

The indicator records the number and ratio of protected areas (Natura 2000, Ramsar Treaty, landscapes of outstanding natural beauty), the centre of which is located within a distance of less than 5km from the nearest road axis. The indicator refers to the relation between ecologically sensitive areas and road network and indicates the possibility of human activities affecting the protected areas.

RESULTS- ASSESSMENT

PROXIMITY TO PROTECTED AREAS BY REGION AND BY SECTOR					
Region/Sector	Total of Protected Areas	Areas in proximity (before Egnatia)		Areas in proximity (after Egnatia)	
Epirus	17	7	41,2%	8	47,1%
Western Sector	17	7	41,2%	8	47,1%
West Macedonia	8	2	25,0%	2	25,0%
Central Macedonia	26	8	30,8%	9	34,6%
Central Sector	34	10	29,4%	11	32,4%
East Macedonia	18	4	22,2%	5	27,8%
Eastern Sector	18	4	22,2%	5	27,8%
Thessaly	11	4	36,4%	4	36,4%
Impact Zone IV	80	25	31,3%	28	35,0%

35% of the zone IV areas that have been incorporated into NATURA 2000 network for the protection of nature (directive 92/43/EU) have their ecologically sensitive core located within a distance of less than 5 km from the closest main national road axis. This means that access to these areas is made particularly easy and they may easily be affected by human activities. On the whole, the alignment of the axis of Egnatia Motorway affects only slightly the road axes' pressure imposed on the protected areas, raising the proximity percentage from 31.5% to 35%.



METADATA

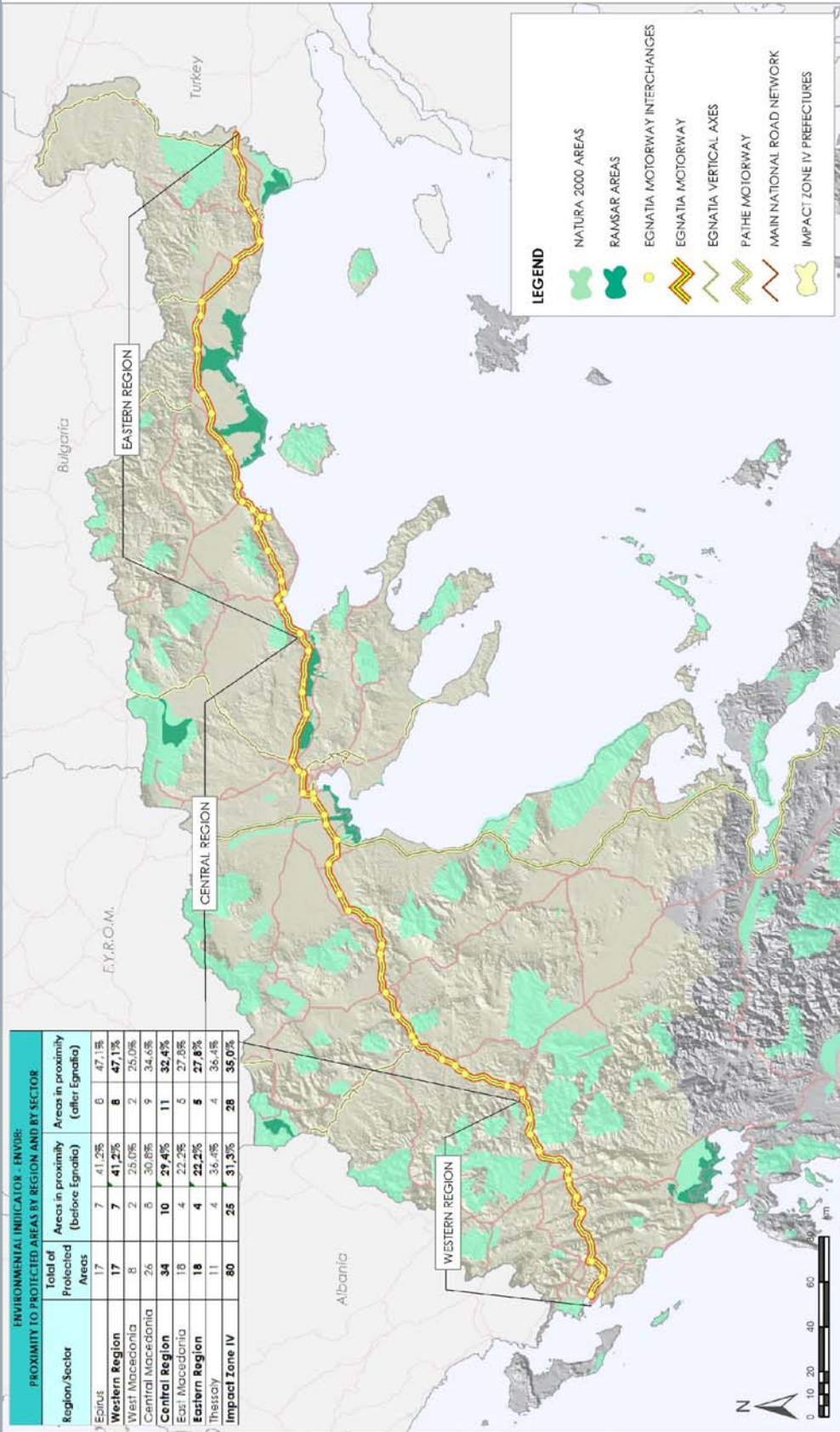
Sources

The vector level of the protected areas (Natura 2000 network, Ramsar, landscapes of outstanding natural beauty), as well as the updated road network database (all categories included) of the data base developed and updated by of the Observatory, have both been used to calculate the indicator.

Methodology

The respective point level with the gravity centres of the polygons results from the polygonal level of the protected areas (Natura 2000 network, Ramsar, landscapes of outstanding natural beauty). In the same way, the distance of each area's centre from every primary and secondary national road axis are calculated, in order to separate and count the distances that are less than 5km. The results of the indicator include the number of protected areas within Zone IV, affected by the main national road network and the respective percentage in total. The calculation of the indicator is applied for the situation before and after the construction of the Egnatia Motorway.

Map 1: Egnatia Motorway and Protected Natural Areas



DATE: 12/02/2008
DATA SOURCE: EC, EEA
FILE: M:\GIS\Indicator\ENV\ENV08\2008\map\mxd\ENV\ENV08_Env08_EN.mxd