




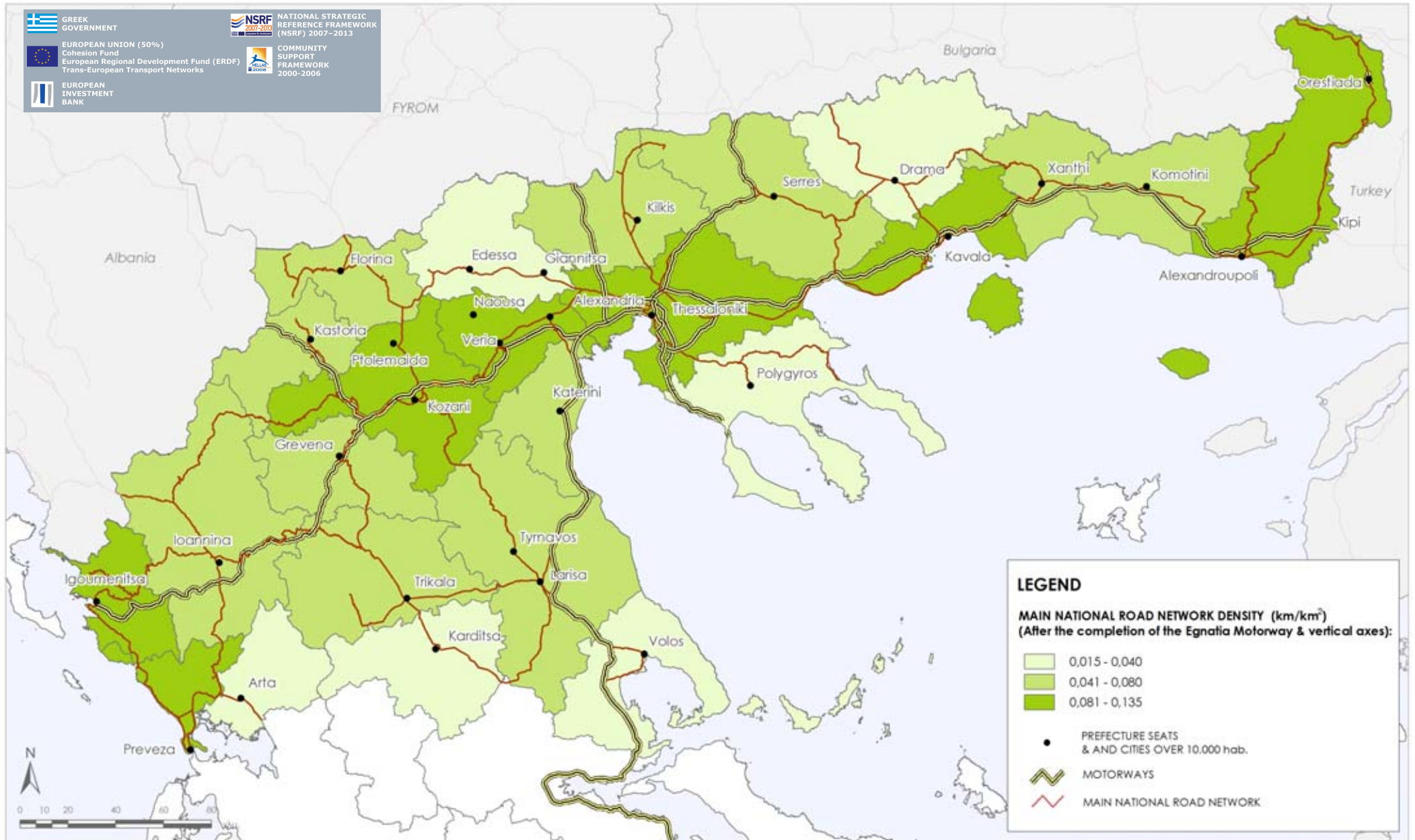


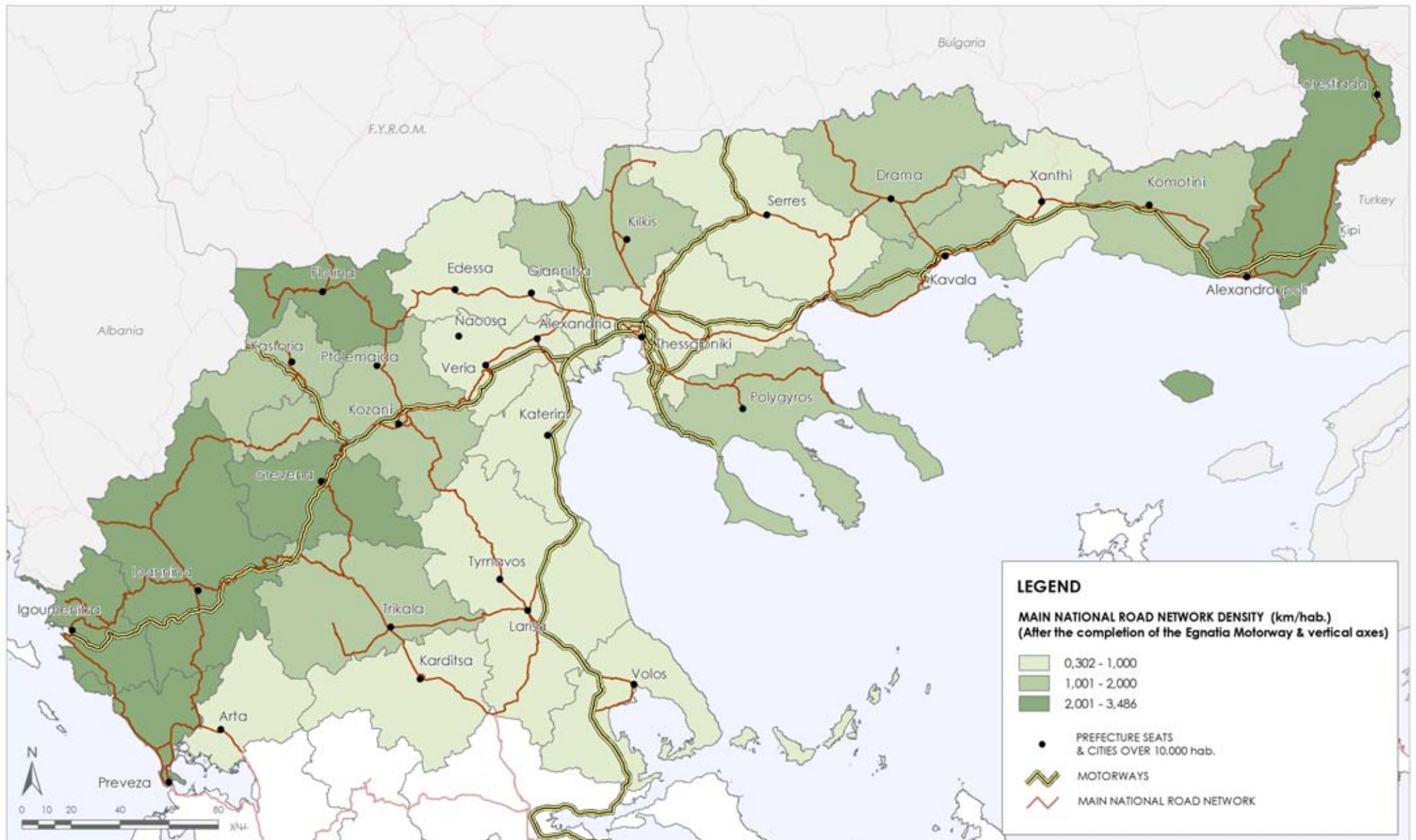
EGNATIA ODOS OBSERVATORY  
 MAIN NATIONAL ROAD NETWORK DENSITY (km/km<sup>2</sup>) PER PREFECTURE OF IMPACT ZONE IV,  
 AFTER THE COMPLETION OF THE EGNATIA MOTORWAY AND VERTICAL AXES

 GREEK GOVERNMENT  
 EUROPEAN UNION (50%)  
 Cohesion Fund  
 European Regional Development Fund (ERDF)  
 Trans-European Transport Networks  
 EUROPEAN INVESTMENT BANK

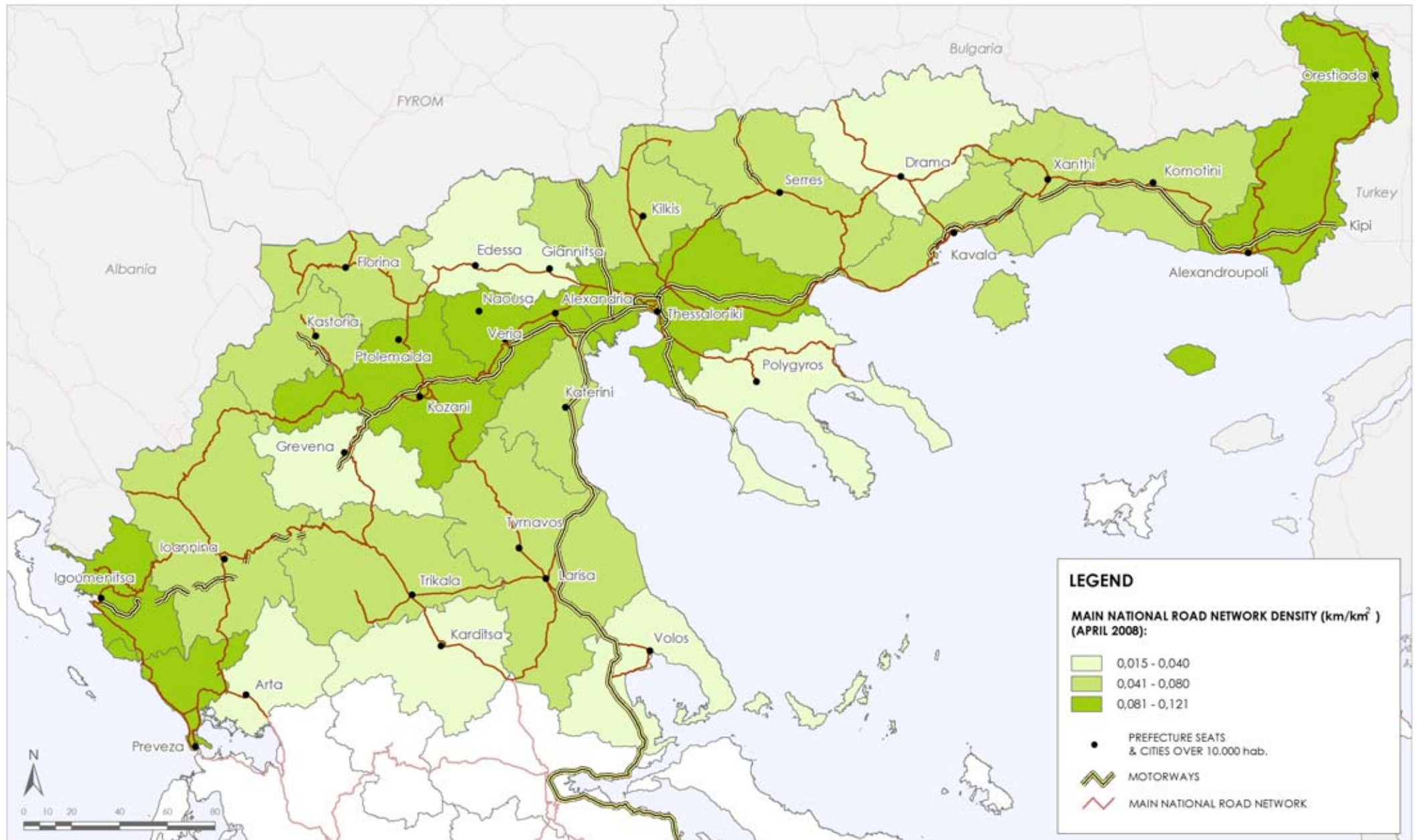
 NATIONAL STRATEGIC REFERENCE FRAMEWORK (NSRF) 2007-2013  
 COMMUNITY SUPPORT FRAMEWORK (NSRF) 2000-2006



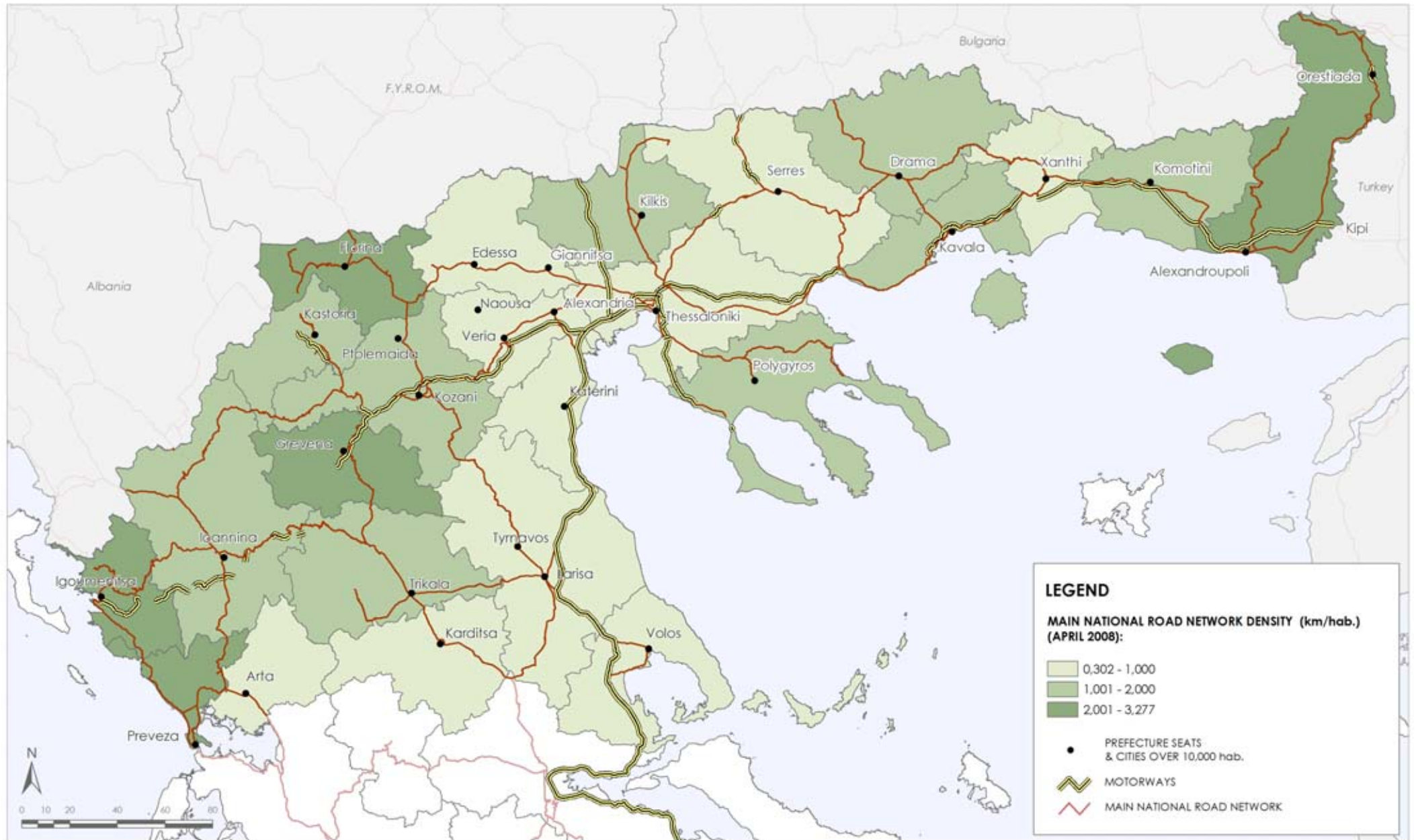
EGNATIA ODOS OBSERVATORY  
 MAIN ROAD NETWORK DENSITY (km/hab) PER PREFECTURE OF IMPACT ZONE IV  
 AFTER THE COMPLETION OF THE EGNATIA MOTORWAY AND THE VERTICAL AXES



EGNATIA ODOS OBSERVATORY  
 MAIN NATIONAL ROAD NETWORK DENSITY (km/km<sup>2</sup>), PER PREFECTURE OF IMPACT ZONE IV,  
 APRIL 2008



EGNATIA ODOS OBSERVATORY  
 MAIN ROAD NETWORK DENSITY (km/hab) PER PREFECTURE OF IMPACT ZONE IV  
 APRIL 2008



**LEGEND**

**MAIN NATIONAL ROAD NETWORK DENSITY (km/hab.) (APRIL 2008):**

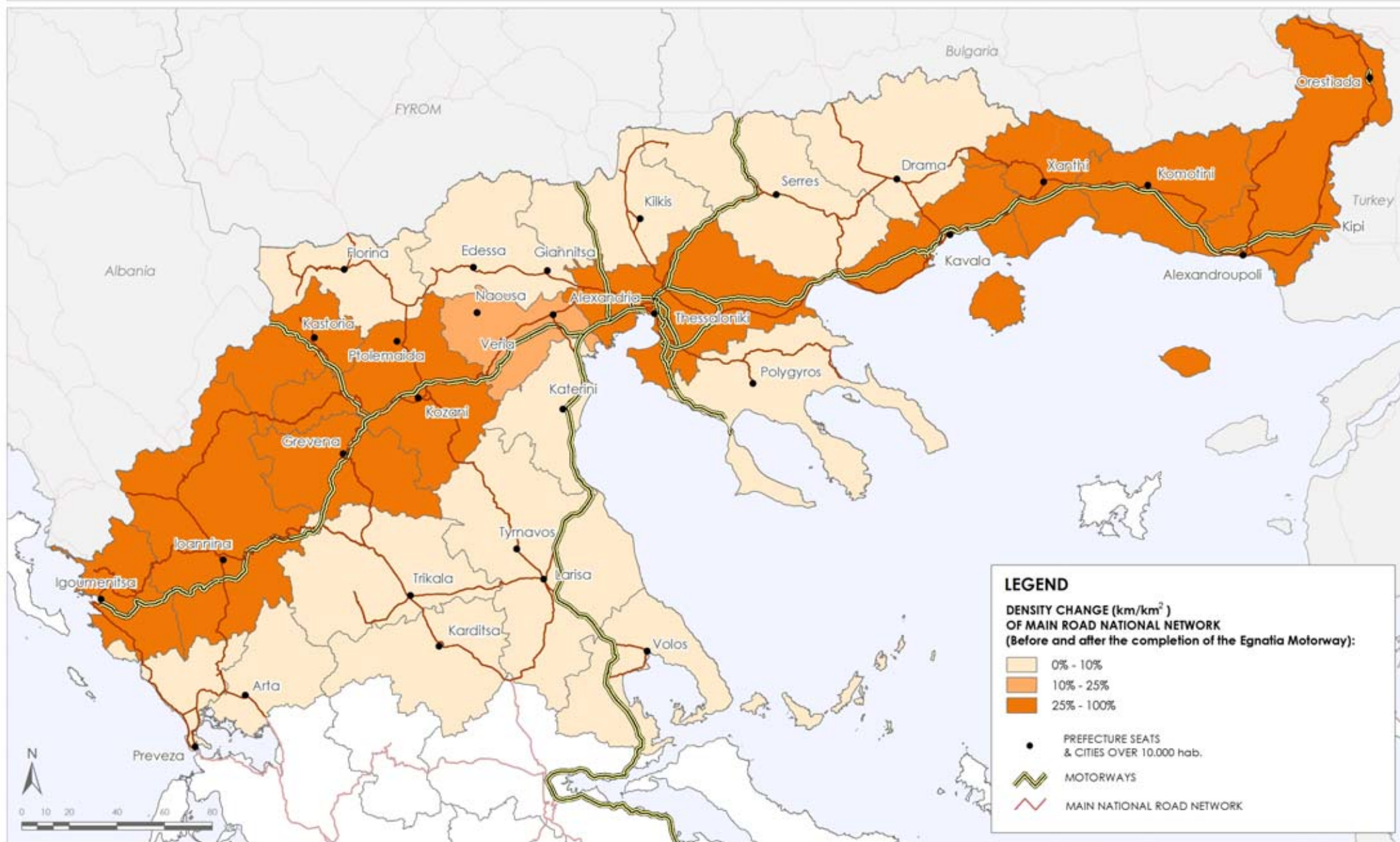
- 0,302 - 1,000
- 1,001 - 2,000
- 2,001 - 3,277

● PREFECTURE SEATS & CITIES OVER 10,000 hab.

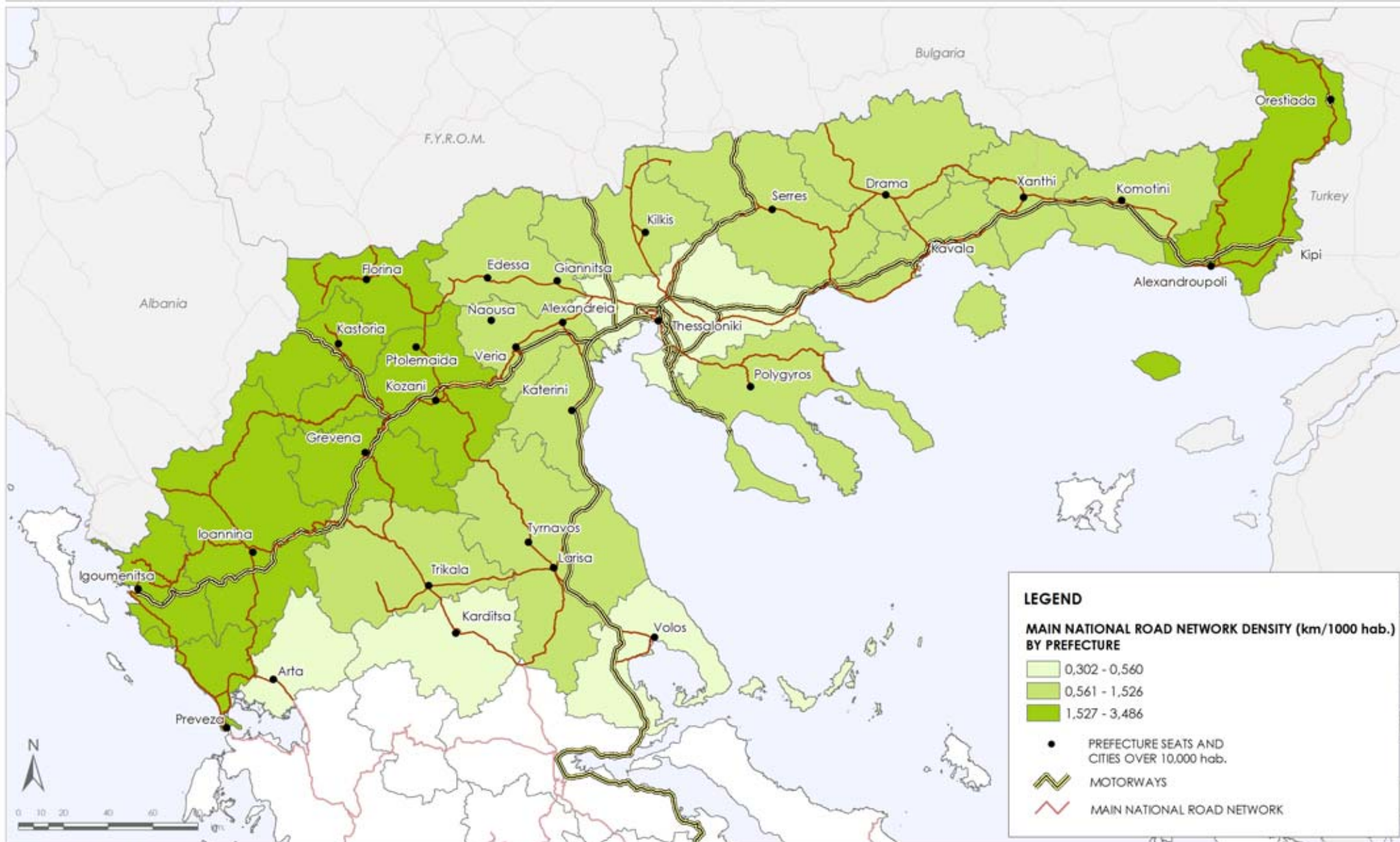
══ MOTORWAYS

══ MAIN NATIONAL ROAD NETWORK

EGNATIA ODOS OBSERVATORY  
 DENSITY CHANGE (km/km<sup>2</sup>) MAIN NATIONAL ROAD NETWORK, PER PREFECTURE OF IMPACT ZONE IV,  
 BEFORE AND AFTER THE COMPLETION OF THE EGNATIA MOTORWAY AND VERTICAL AXES



EGNATIA ODOS OBSERVATORY  
 MAIN NATIONAL ROAD NETWORK DENSITY (km/1000 hab.) BY PREFECTURE  
 UPON THE COMPLETION OF EGNATIA MOTORWAY AND VERTICAL AXES



**LEGEND**

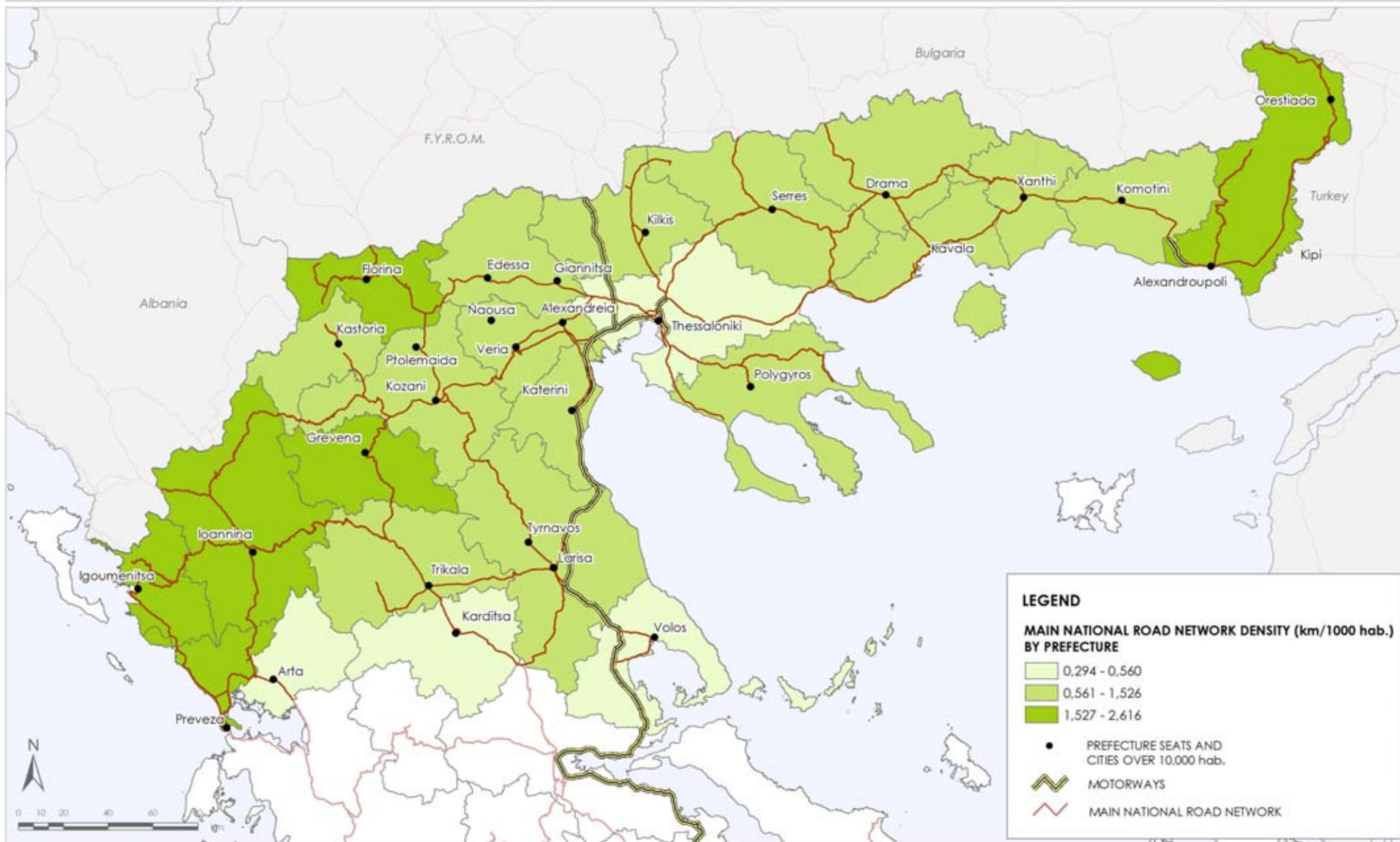
**MAIN NATIONAL ROAD NETWORK DENSITY (km/1000 hab.) BY PREFECTURE**

- 0,302 - 0,560
- 0,561 - 1,526
- 1,527 - 3,486

- PREFECTURE SEATS AND CITIES OVER 10,000 hab.
- ══ MOTORWAYS
- ══ MAIN NATIONAL ROAD NETWORK



EGNATIA ODOS OBSERVATORY  
 MAIN NATIONAL ROAD NETWORK DENSITY (km/1000 hab.) BY PREFECTURE  
 WITHOUT EGNATIA MOTORWAY AND VERTICAL AXES



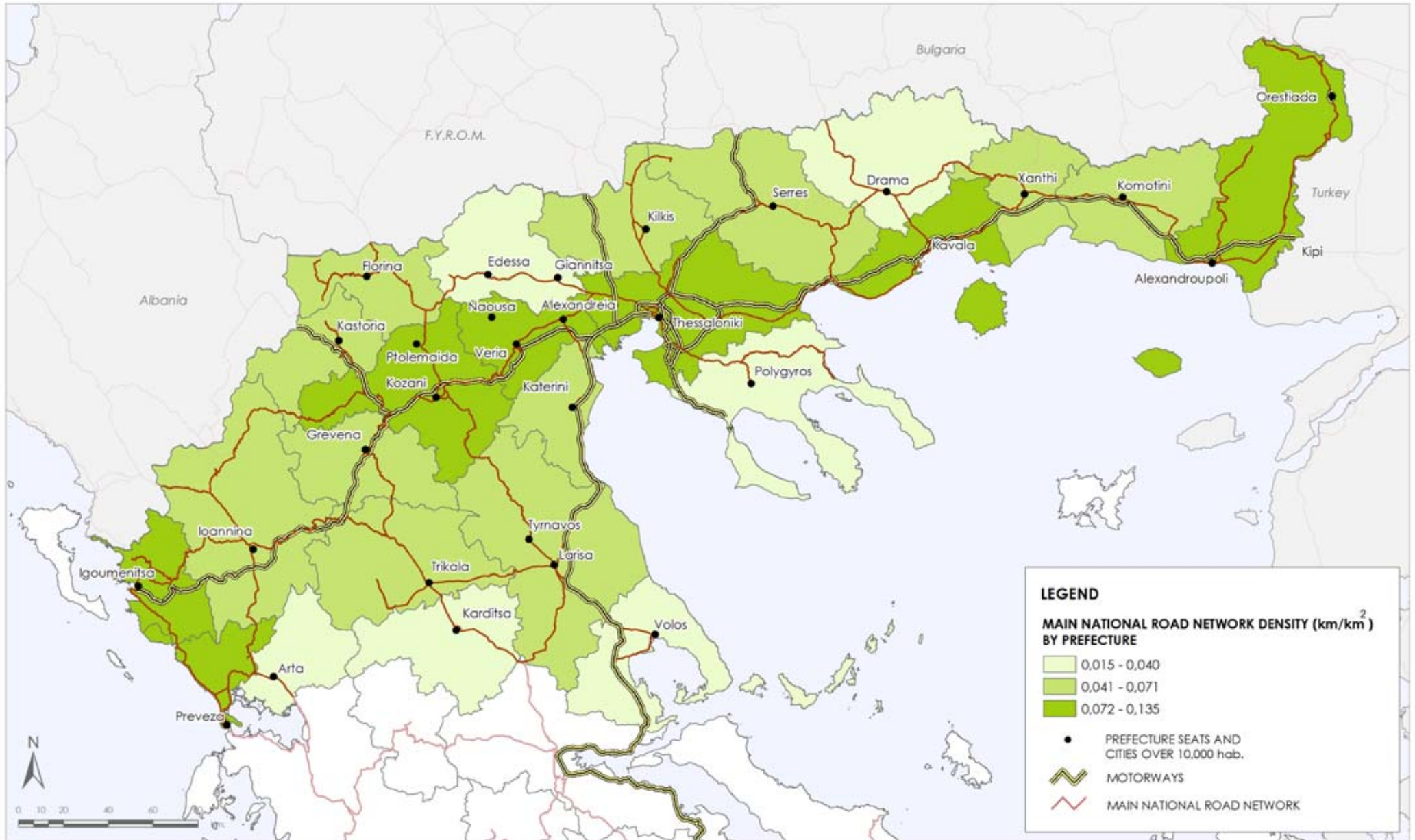
**LEGEND**

**MAIN NATIONAL ROAD NETWORK DENSITY (km/1000 hab.) BY PREFECTURE**

- 0.294 - 0.560
- 0.561 - 1.526
- 1.527 - 2.616

- PREFECTURE SEATS AND CITIES OVER 10,000 hab.
- ══ MOTORWAYS
- MAIN NATIONAL ROAD NETWORK

EGNATIA ODOS OBSERVATORY  
 MAIN NATIONAL ROAD NETWORK DENSITY (km/km<sup>2</sup>) BY PREFECTURE  
 UPON THE COMPLETION OF EGNATIA MOTORWAY AND VERTICAL AXES



**LEGEND**

**MAIN NATIONAL ROAD NETWORK DENSITY (km/km<sup>2</sup>) BY PREFECTURE**

- 0.015 - 0.040
- 0.041 - 0.071
- 0.072 - 0.135

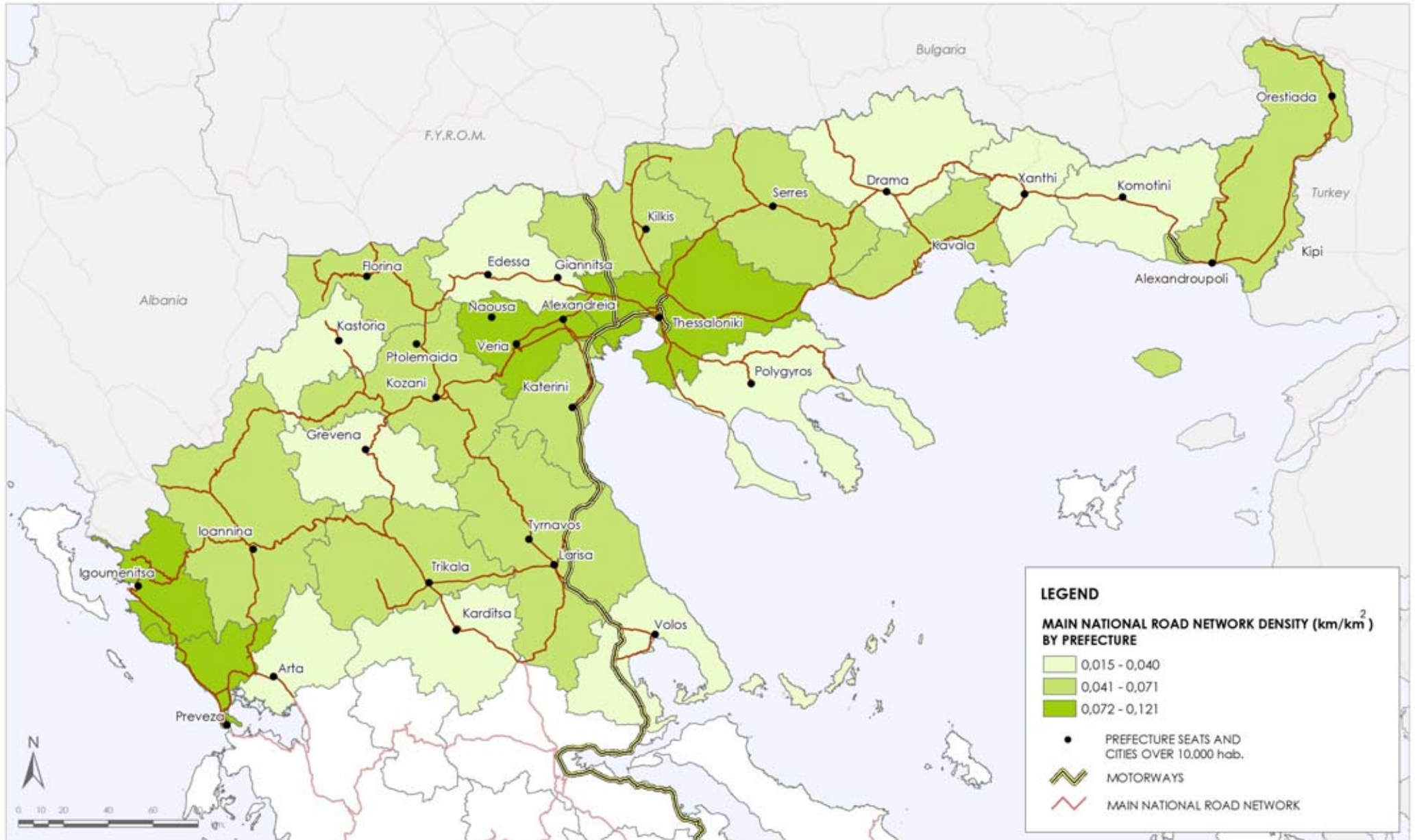
● PREFECTURE SEATS AND CITIES OVER 10,000 hab.

≡ MOTORWAYS

— MAIN NATIONAL ROAD NETWORK



EGNATIA ODOS OBSERVATORY  
 MAIN NATIONAL ROAD NETWORK DENSITY (km/km<sup>2</sup>) BY PREFECTURE  
 WITHOUT EGNATIA MOTORWAY AND VERTICAL AXES



**LEGEND**

**MAIN NATIONAL ROAD NETWORK DENSITY (km/km<sup>2</sup>) BY PREFECTURE**

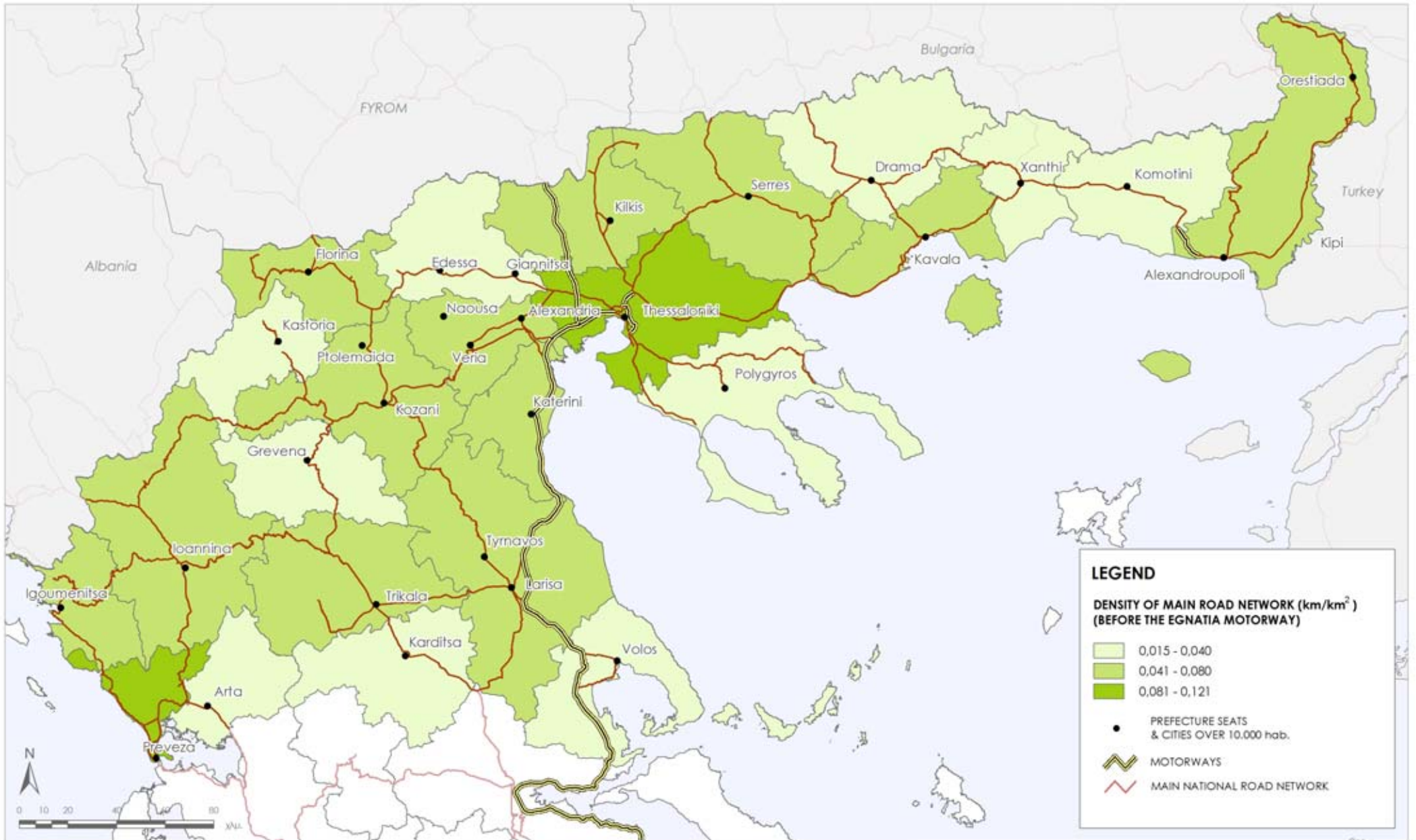
- 0.015 - 0,040
- 0.041 - 0,071
- 0.072 - 0,121

● PREFECTURE SEATS AND CITIES OVER 10,000 hab.

≡ MOTORWAYS

— MAIN NATIONAL ROAD NETWORK

EGNATIA ODOS OBSERVATORY  
 MAIN NATIONAL ROAD NETWORK DENSITY (km/km<sup>2</sup>), PER PREFECTURE OF IMPACT ZONE IV,  
 BEFORE THE EGNATIA MOTORWAY



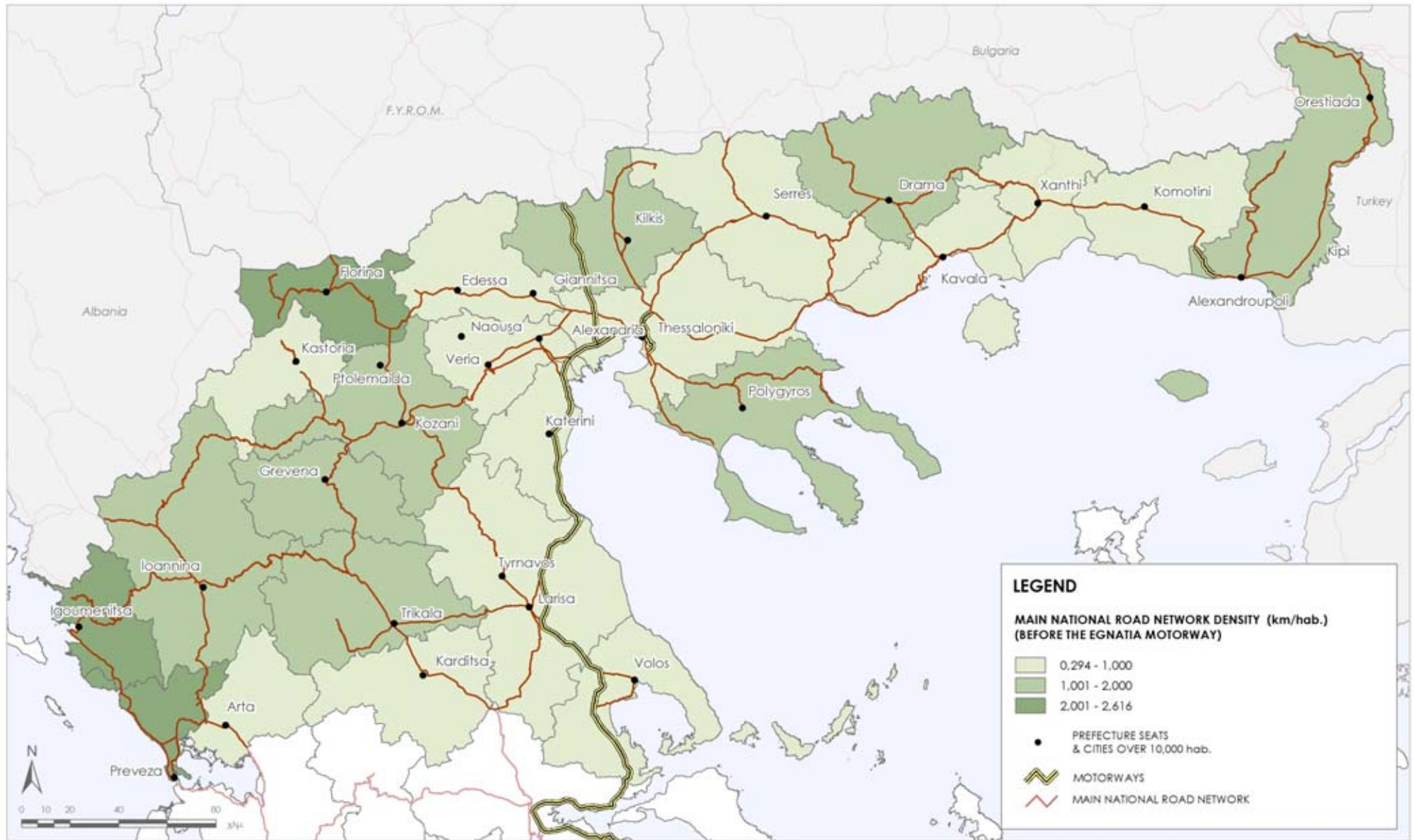
**LEGEND**

**DENSITY OF MAIN ROAD NETWORK (km/km<sup>2</sup>) (BEFORE THE EGNATIA MOTORWAY)**

- 0,015 - 0,040
- 0,041 - 0,080
- 0,081 - 0,121

- PREFECTURE SEATS & CITIES OVER 10,000 hab.
- ══ MOTORWAYS
- ══ MAIN NATIONAL ROAD NETWORK

EGNATIA ODOS OBSERVATORY  
 MAIN ROAD NETWORK DENSITY (km/hab) PER PREFECTURE OF IMPACT ZONE IV  
 BEFORE THE EGNATIA MOTORWAY



**LEGEND**

**MAIN NATIONAL ROAD NETWORK DENSITY (km/hab.) (BEFORE THE EGNATIA MOTORWAY)**

- 0.294 - 1.000
- 1.001 - 2.000
- 2.001 - 2.616
- PREFECTURE SEATS & CITIES OVER 10,000 hab.
- MOTORWAYS
- MAIN NATIONAL ROAD NETWORK