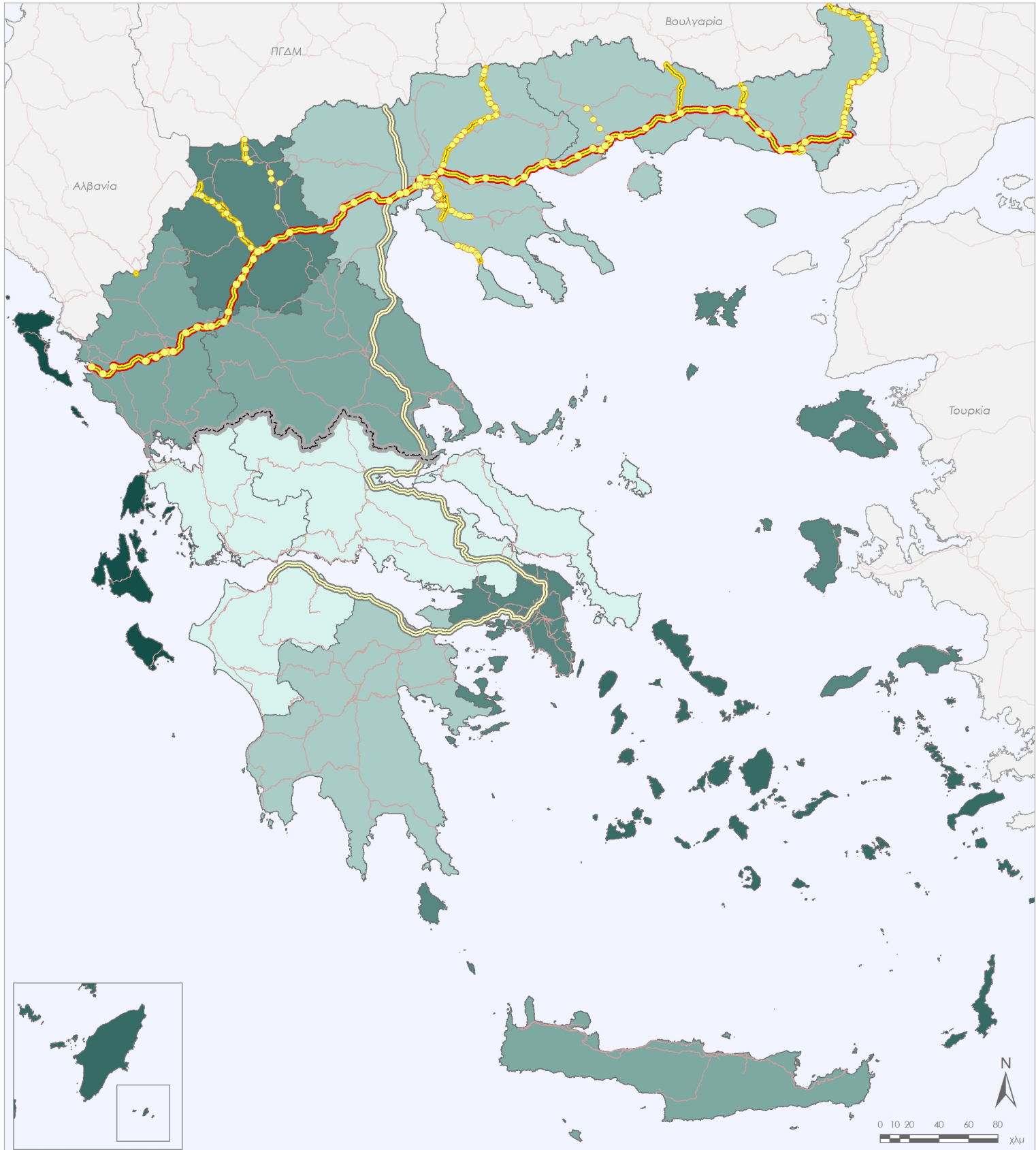
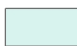













EGNATIA MOTORWAY OBSERVATORY
 TOTAL NUMBER OF BUSES PER 1,000 INHABITANTS
 PER PERFECTURES, 2013

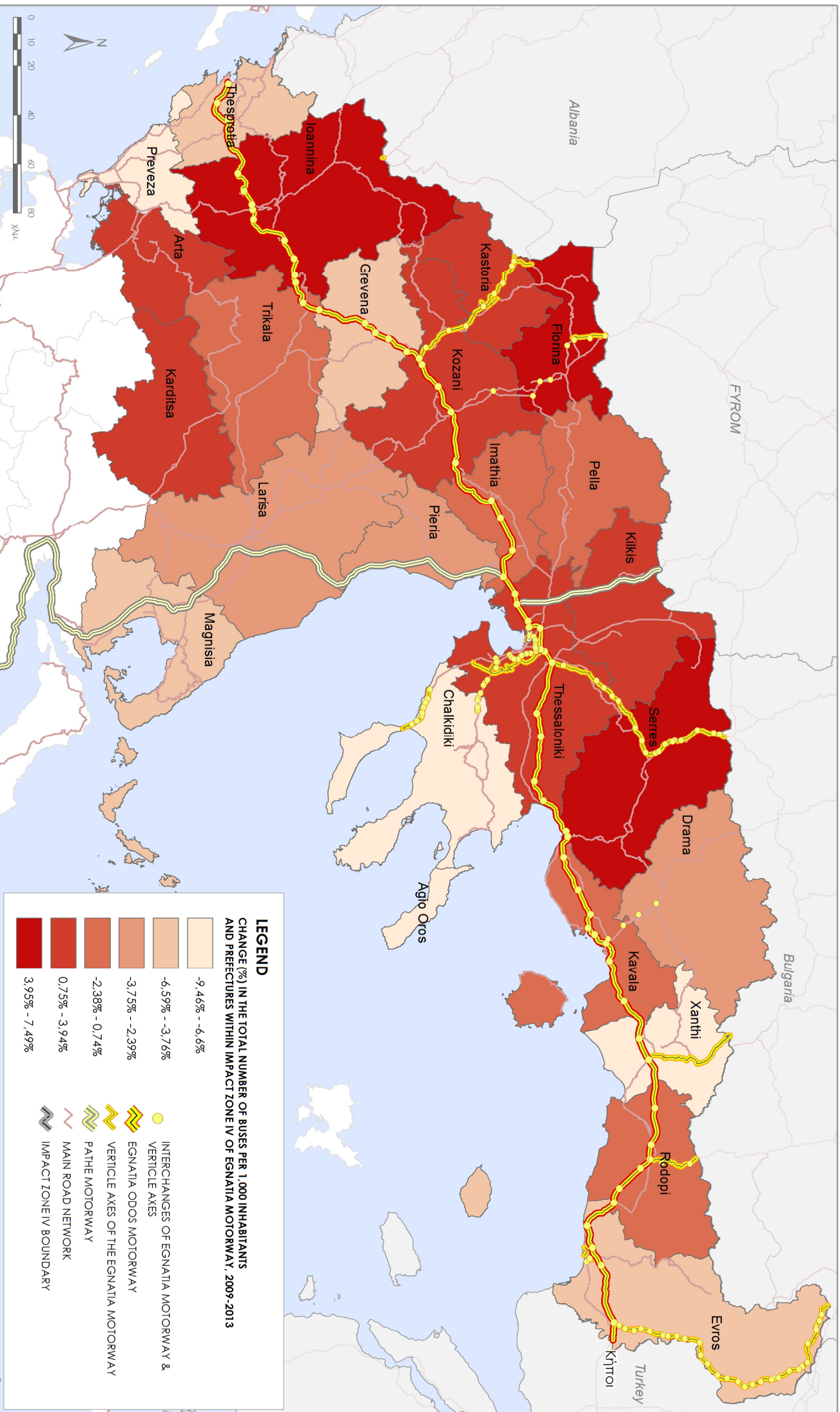


LEGEND

TOTAL NUMBER OF BUSES PER 1,000 INHABITANTS
 PER PERFECTURES, 2013

- | | | | |
|--|-------------|---|--|
|  | <1,20 |  | INTERCHANGES OF EGNATIA MOTORWAY & VERTICLE AXES |
|  | 1,21 - 1,75 |  | EGNATIA ODOS MOTORWAY |
|  | 1,76 - 1,90 |  | VERTICLE AXES OF THE EGNATIA MOTORWAY |
|  | 1,91 - 2,40 |  | PATHE MOTORWAY |
|  | 2,41 - 4,50 |  | MAIN ROAD NETWORK |
|  | >4,51 |  | IMPACT ZONE IV BOUNDARY |

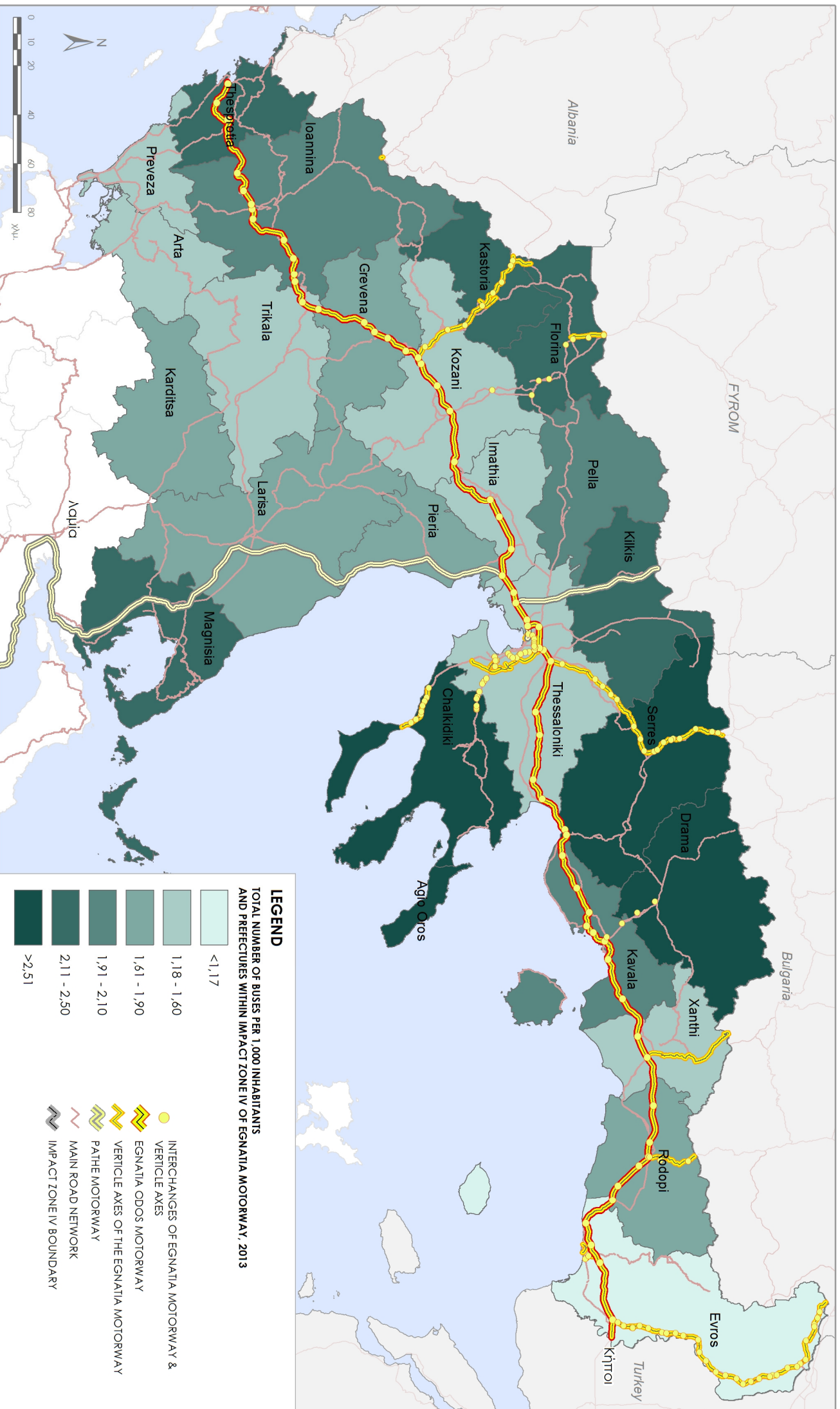




LEGEND
 CHANGE (%) IN THE TOTAL NUMBER OF BUSES PER 1,000 INHABITANTS
 AND PREFECTURES WITHIN IMPACT ZONE IV OF EGNATIA MOTORWAY, 2009-2013

- 9.46% - -6.6%
 - 6.59% - -3.76%
 - 3.75% - -2.39%
 - 2.38% - 0.74%
 - 0.75% - 3.94%
 - 3.95% - 7.49%
- INTERCHANGES OF EGNATIA MOTORWAY & VERTICLE AXES
 - EGNATIA ODS MOTORWAY
 - VERTICLE AXES OF THE EGNATIA MOTORWAY
 - PATHE MOTORWAY
 - MAIN ROAD NETWORK
 - IMPACT ZONE IV BOUNDARY

EGNATIA MOTORWAY OBSERVATORY
 TOTAL NUMBER OF BUSES PER 1,000 INHABITANTS
 AND PREFECTURES WITHIN IMPACT ZONE IV OF EGNATIA MOTORWAY, 2013

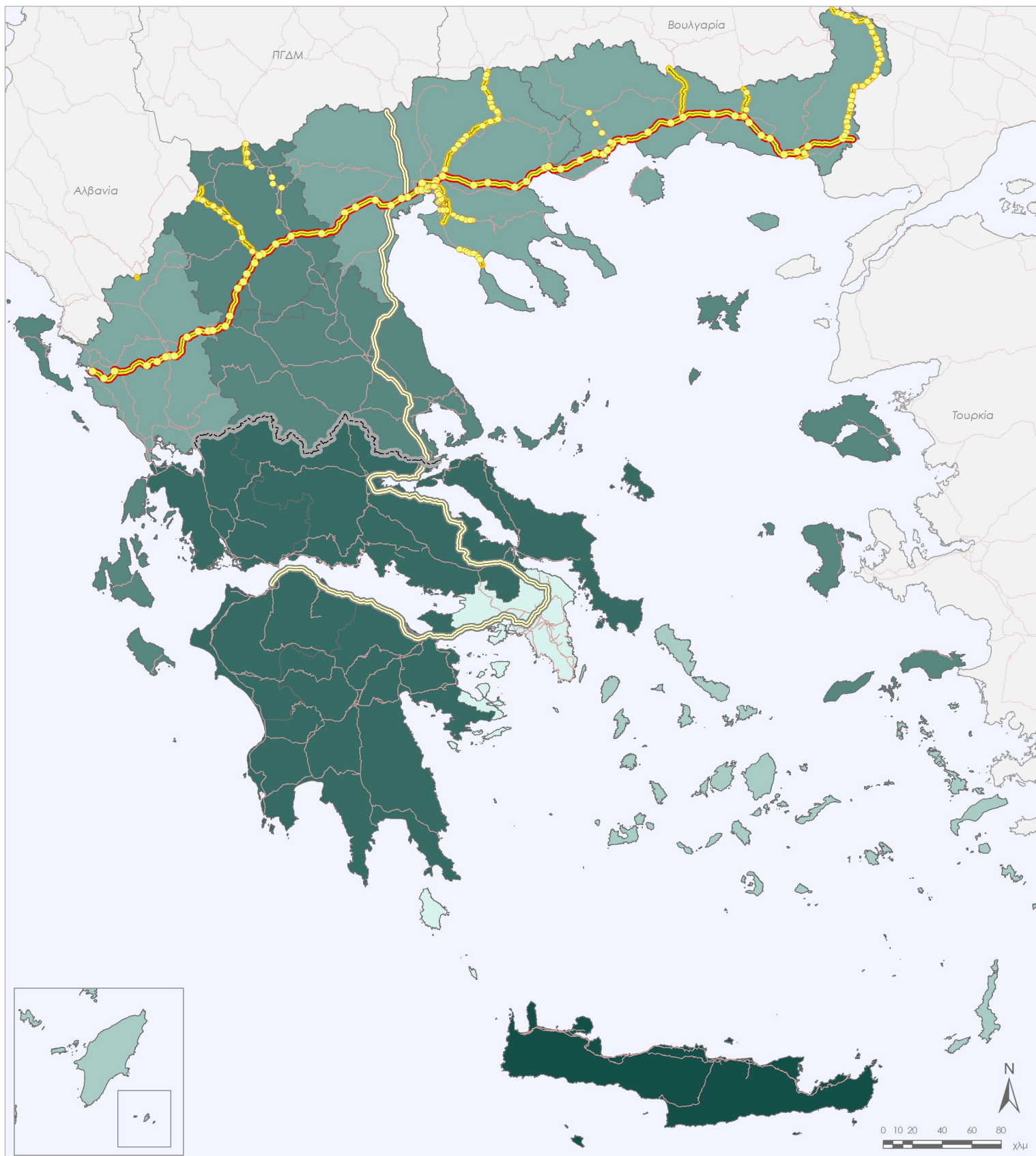


LEGEND
 TOTAL NUMBER OF BUSES PER 1,000 INHABITANTS
 AND PREFECTURES WITHIN IMPACT ZONE IV OF EGNATIA MOTORWAY, 2013

<1,17	INTERCHANGES OF EGNATIA MOTORWAY & VERTICLE AXES
1,18 - 1,60	EGNATIA ODS MOTORWAY
1,61 - 1,90	VERTICLE AXES OF THE EGNATIA MOTORWAY
1,91 - 2,10	PATHE MOTORWAY
2,11 - 2,50	MAIN ROAD NETWORK
>2,51	IMPACT ZONE IV BOUNDARY



EGNATIA MOTORWAY OBSERVATORY
 TOTAL NUMBER OF LORRIES PER 1,000 INHABITANTS
 PER PERPECTURES, 2013



LEGEND

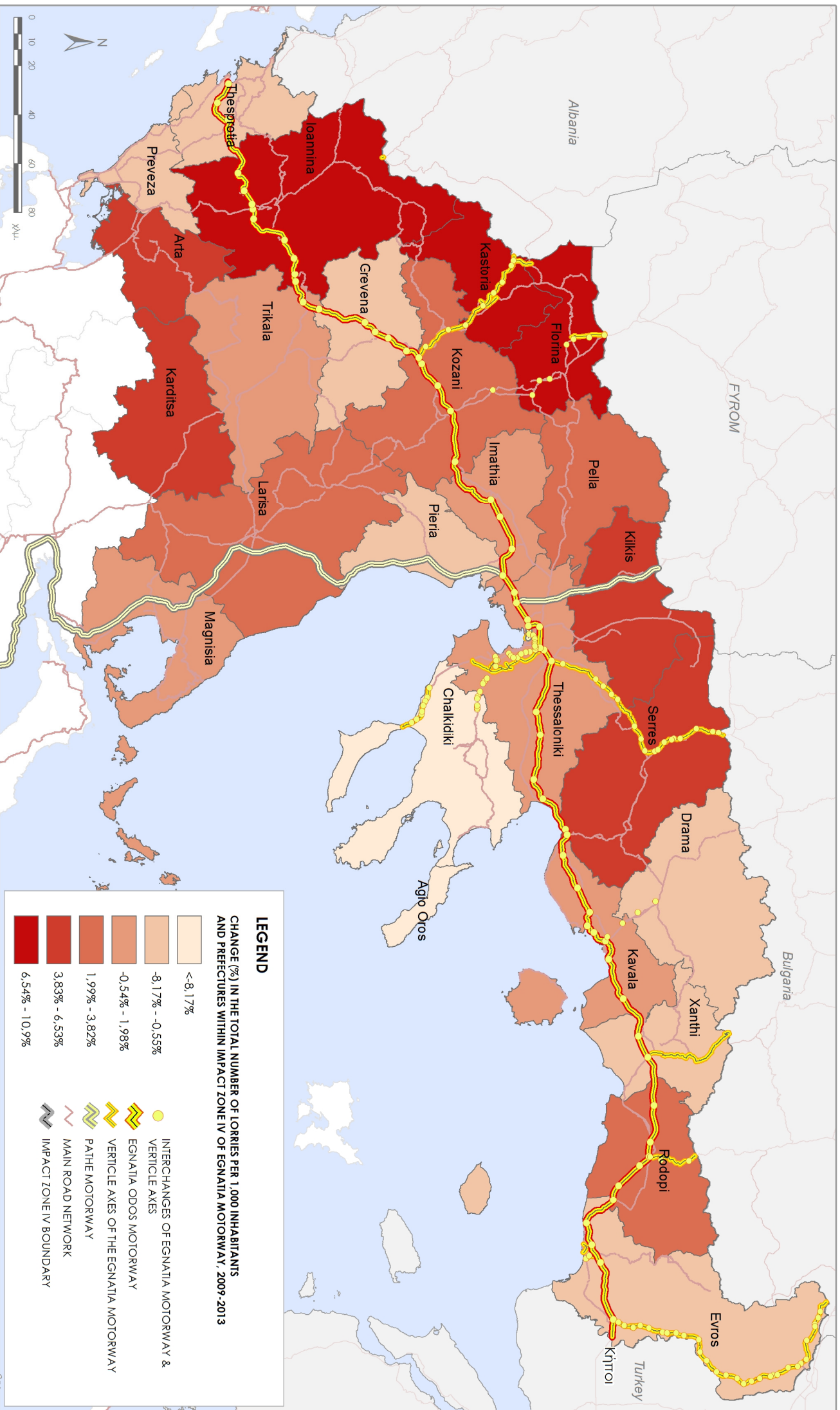
TOTAL NUMBER OF LORRIES PER 1,000 INHABITANTS
 PER PERPECTURES, 2013

- | | | | |
|--|-----------|--|--|
| | <80 | | INTERCHANGES OF EGNATIA MOTORWAY & VERTICLE AXES |
| | 81 - 110 | | EGNATIA ODOS MOTORWAY |
| | 111 - 135 | | VERTICLE AXES OF THE EGNATIA MOTORWAY |
| | 136 - 150 | | PATHE MOTORWAY |
| | 151 - 190 | | MAIN ROAD NETWORK |
| | >200 | | IMPACT ZONE IV BOUNDARY |

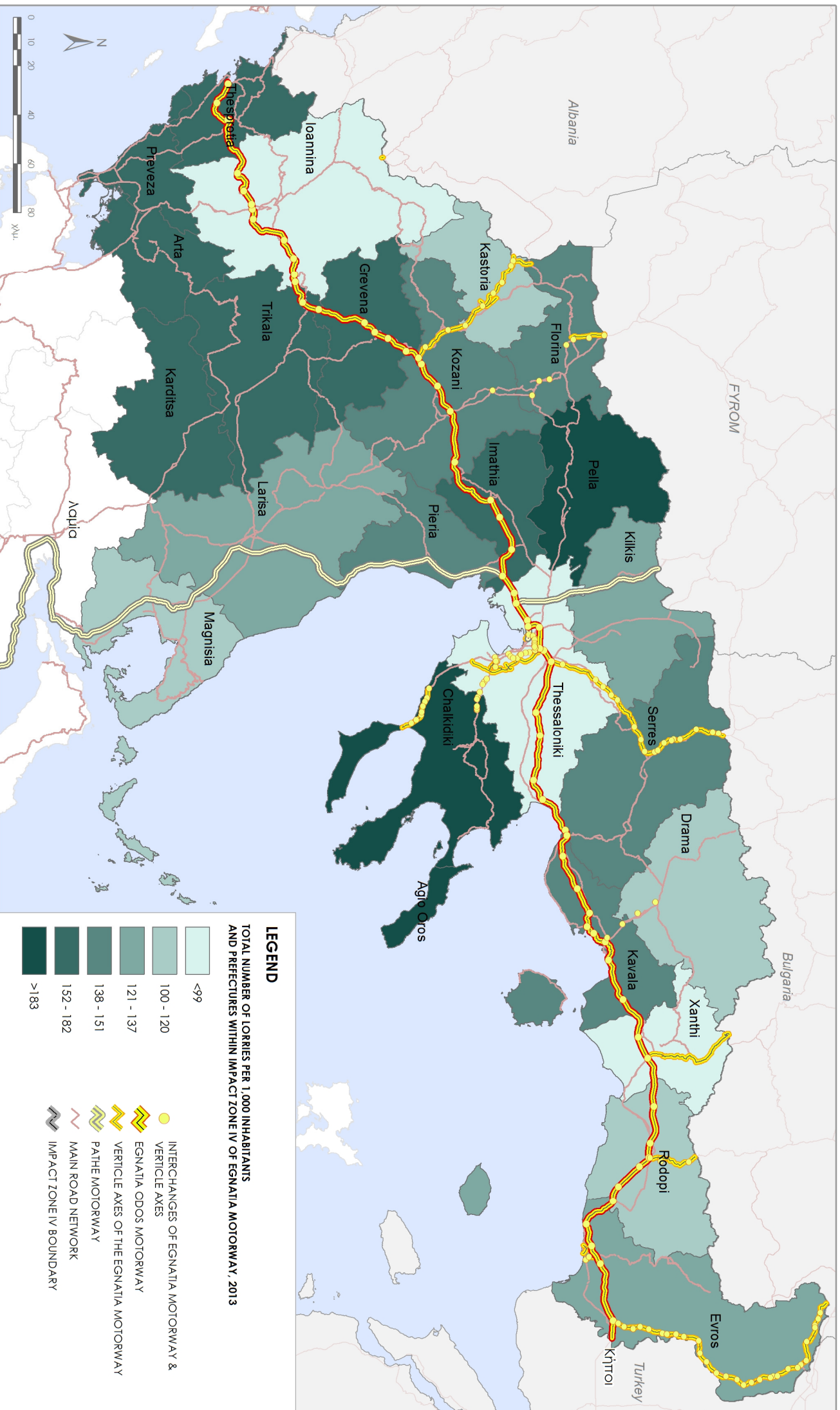
EGNATIA ODOS A.E.
 OBSERVATORY



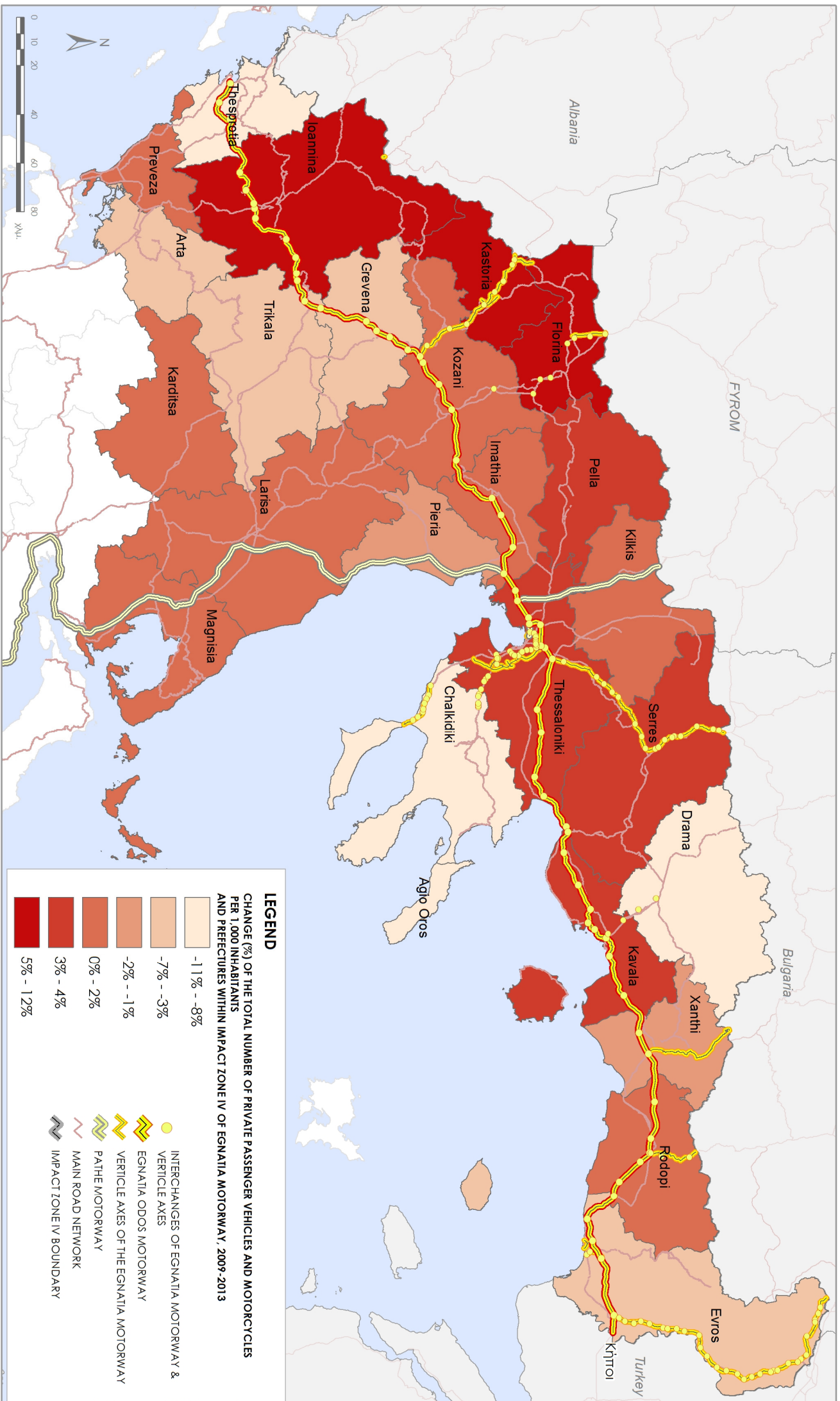
EGNATIA MOTORWAY OBSERVATORY
 RATE OF CHANGE IN THE TOTAL NUMBER OF LORRIES PER 1,000 INHABITANTS
 AND PREFECTURES WITHIN IMPACT ZONE IV OF EGNATIA MOTORWAY, 2009-2013



EGNATIA MOTORWAY OBSERVATORY
 TOTAL NUMBER OF LORRIES PER 1,000 INHABITANTS
 AND PREFECTURES WITHIN IMPACT ZONE IV OF EGNATIA MOTORWAY, 2013



EGNATIA MOTORWAY OBSERVATORY
 RATE OF CHANGE IN THE TOTAL NUMBER OF PRIVATE PASSENGER VEHICLES AND MOTORCYCLES PER 1,000 INHABITANTS
 AND PREFECTURES WITHIN IMPACT ZONE IV OF EGNATIA MOTORWAY, 2009-2013



LEGEND

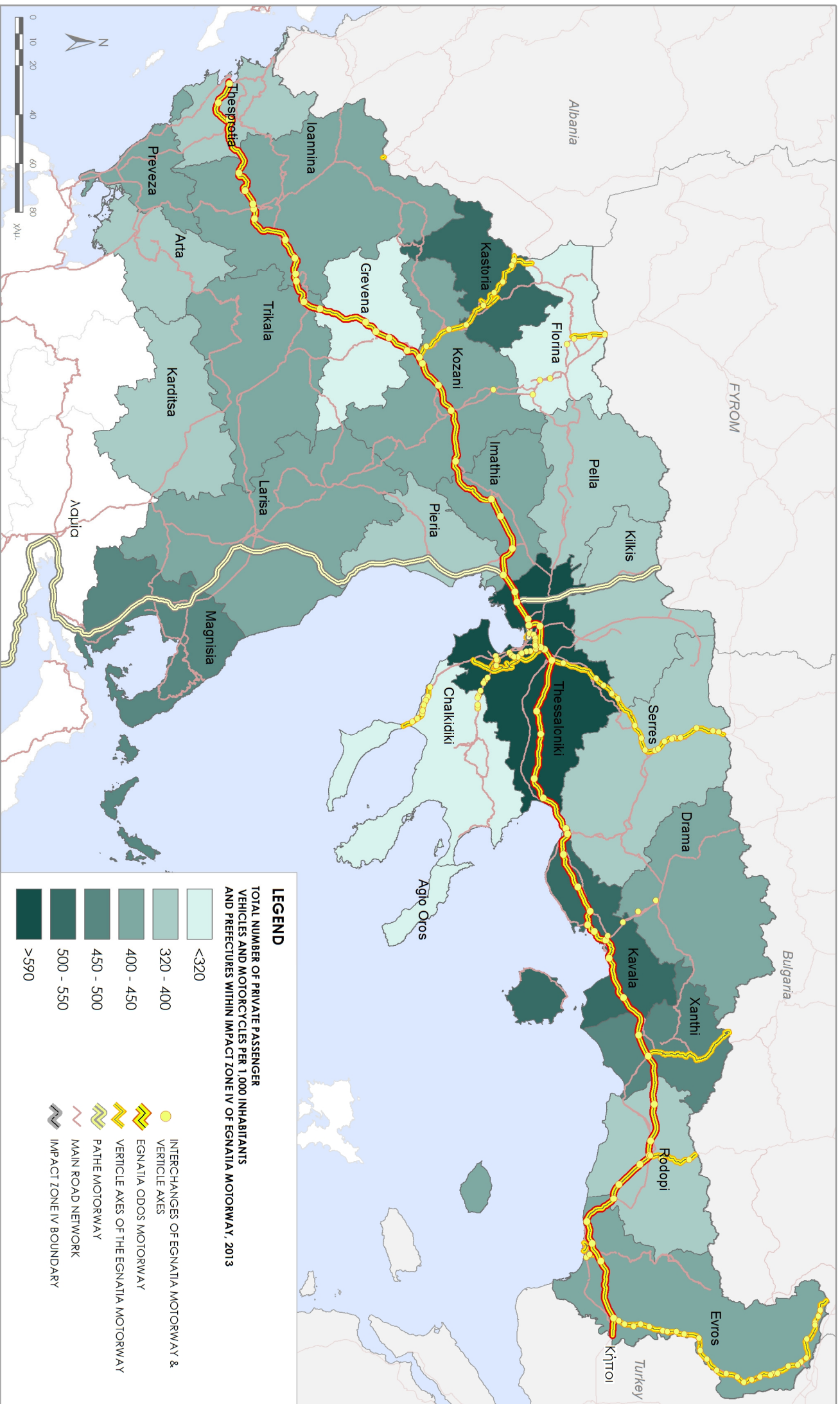
CHANGE (%) OF THE TOTAL NUMBER OF PRIVATE PASSENGER VEHICLES AND MOTORCYCLES PER 1,000 INHABITANTS AND PREFECTURES WITHIN IMPACT ZONE IV OF EGNATIA MOTORWAY, 2009-2013

5% - 12%
3% - 4%
0% - 2%
-2% - -1%
-7% - -3%
-11% - -8%

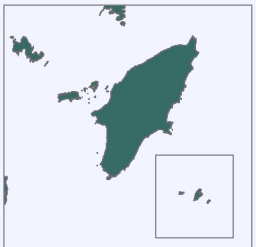
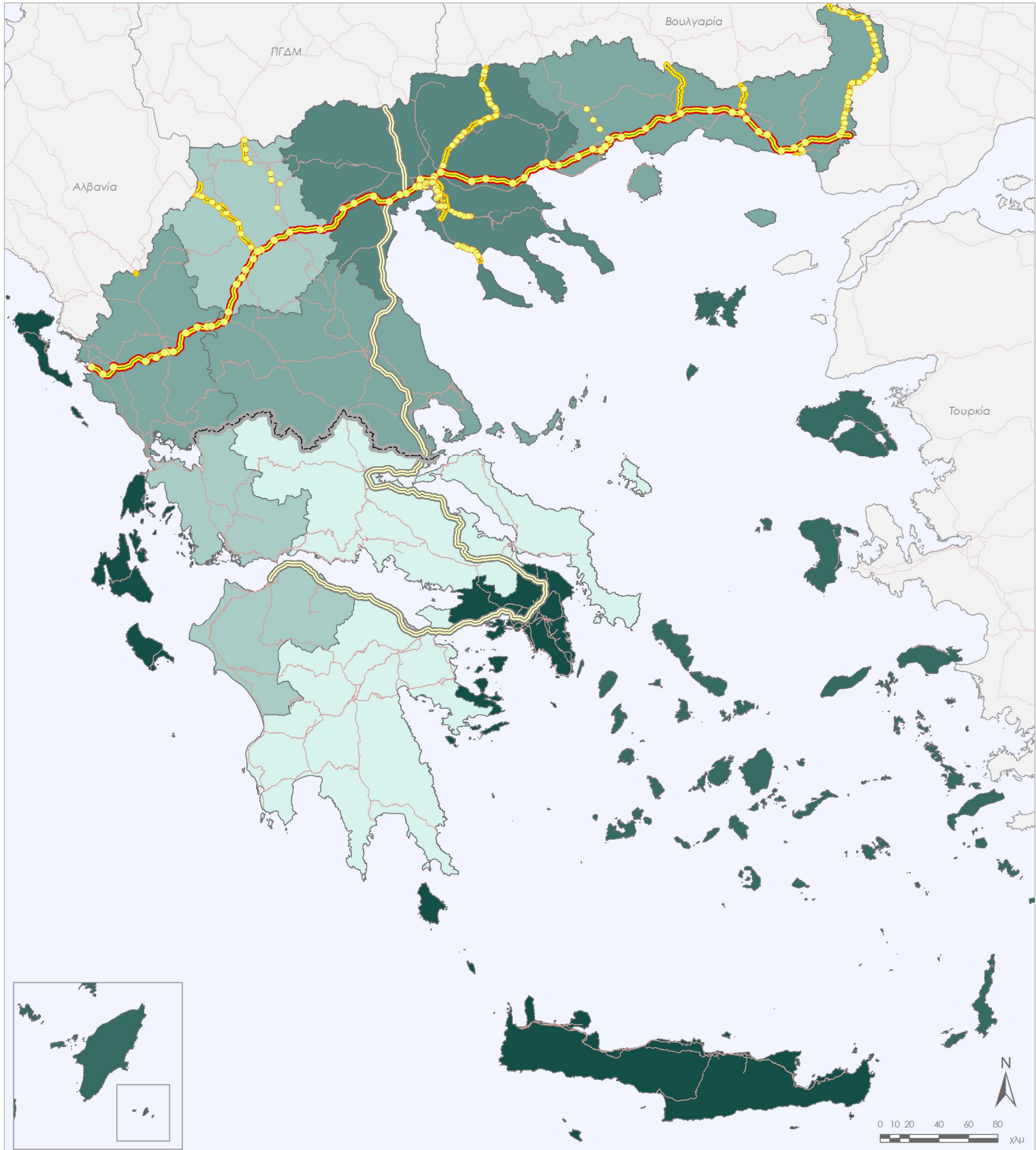
● INTERCHANGES OF EGNATIA MOTORWAY & VERTICLE AXES
 EGNATIA ODOSS MOTORWAY
 VERTICLE AXES OF THE EGNATIA MOTORWAY
 PATHE MOTORWAY
 MAIN ROAD NETWORK
 IMPACT ZONE IV BOUNDARY

DATE : 24/06/2014
 DATA SOURCE : EYVE 06/2014 kai Eurostod 06/2014
 FILE : \\Cepheus\jobs\GIS\projects_2008+2014\p1_Vehicles\maps\mxd\GR\IX_csis_mnoio_diff_znIV.mxd

EGNATIA MOTORWAY OBSERVATORY
 TOTAL NUMBER OF PRIVATE PASSENGER VEHICLES AND MOTORCYCLES PER 1,000 INHABITANTS
 AND PREFECTURES WITHIN IMPACT ZONE IV OF EGNATIA MOTORWAY, 2013



EGNATIA MOTORWAY OBSERVATORY
 TOTAL NUMBER OF PRIVATE PASSENGER VEHICLES AND MOTORCYCLES PER 1,000 INHABITANTS
 AND PREFECTURE, 2013



LEGEND

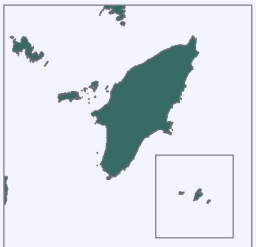
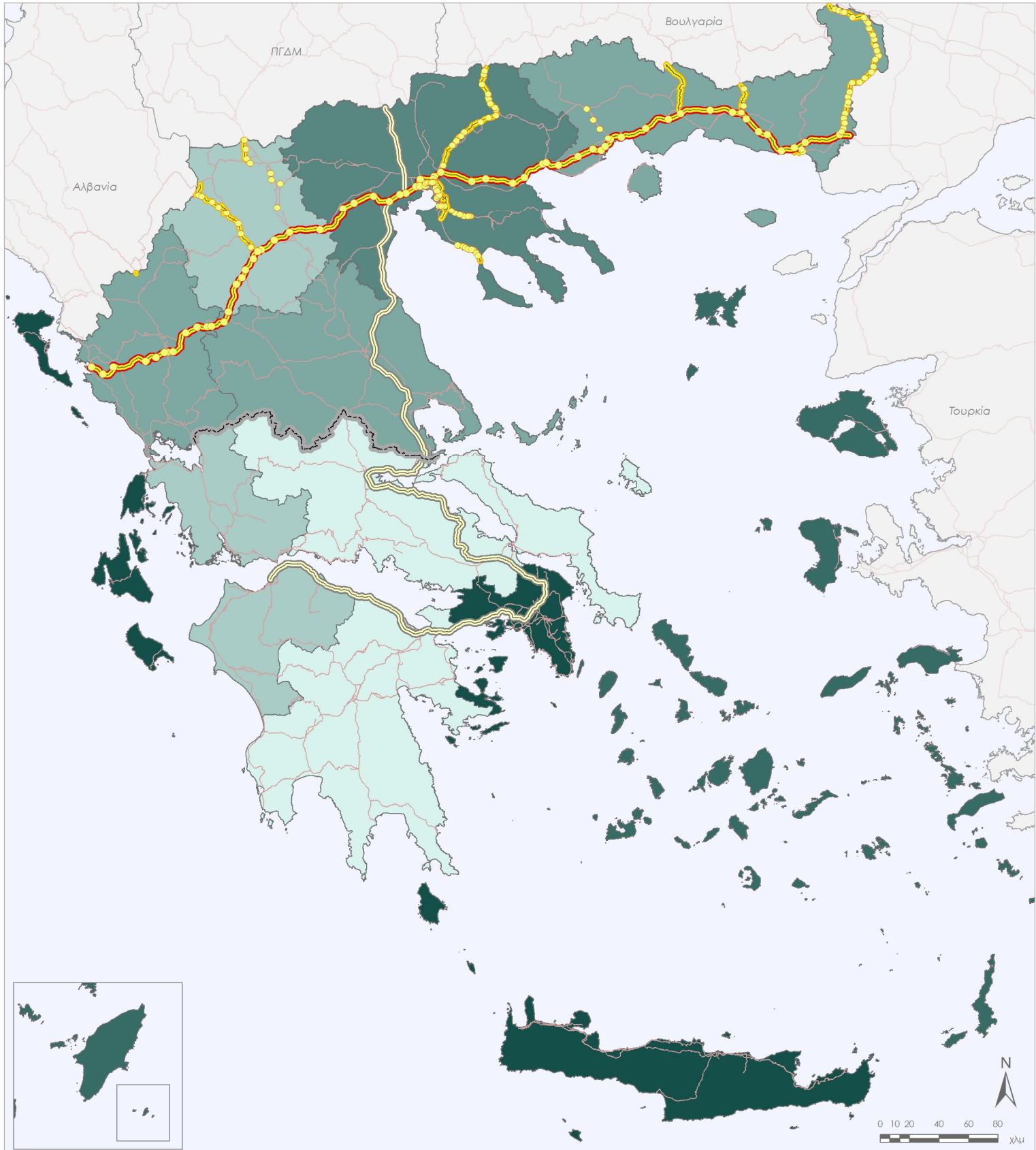
TOTAL NUMBER OF PRIVATE PASSENGER VEHICLES AND MOTORCYCLES PER 1,000 INHABITANTS AND PREFECTURE, 2013

- | | | | |
|--|-----------|--|--|
| | < 320 | | INTERCHANGES OF EGNATIA MOTORWAY & VERTICLE AXES |
| | 320 - 400 | | EGNATIA ODOS MOTORWAY |
| | 400 - 450 | | VERTICLE AXES OF THE EGNATIA MOTORWAY |
| | 450 - 500 | | PATHE MOTORWAY |
| | 500 - 600 | | MAIN ROAD NETWORK |
| | > 600 | | IMPACT ZONE IV BOUNDARY |



DATE : 24/06/2014
 DATA SOURCE: ΕΣΥΕ 06/2014 και Eurostat 06/2014
 FILE : \\Cepheus\obs\GIS\projects_2008+\2014\prj_Vehicles\maps\mxd\GR\cars_hab.mxd

EGNATIA MOTORWAY OBSERVATORY
 TOTAL NUMBER OF PRIVATE PASSENGER VEHICLES AND MOTORCYCLES PER 1,000 INHABITANTS
 AND PREFECTURES, 2013



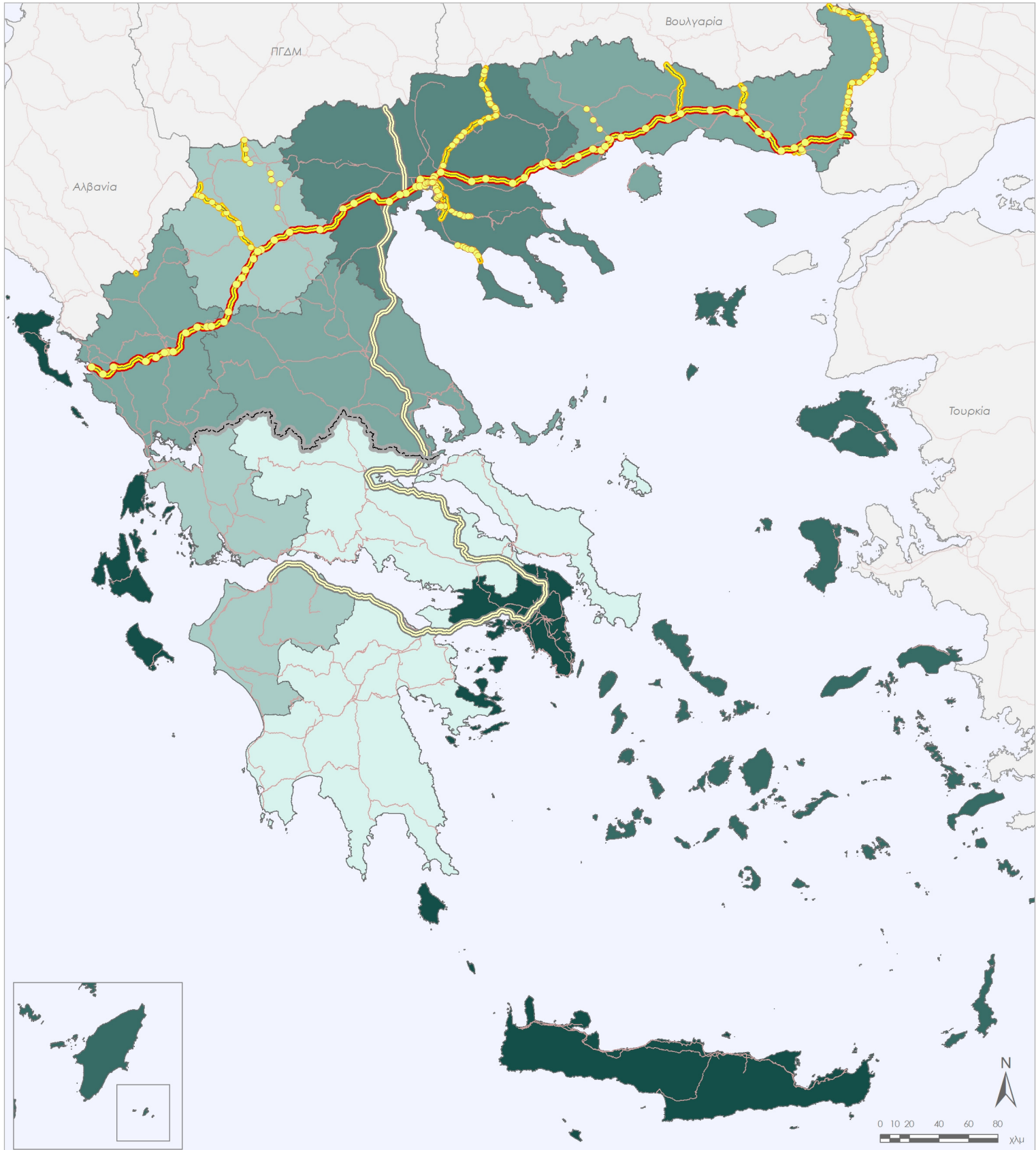
LEGEND

TOTAL NUMBER OF PRIVATE PASSENGER VEHICLES AND MOTORCYCLES PER 1,000 INHABITANTS AND PREFECTURES, 2013

- | | | | |
|--|-----------|--|--|
| | < 320 | | INTERCHANGES OF EGNATIA MOTORWAY & VERTICLE AXES |
| | 320 - 400 | | EGNATIA ODOS MOTORWAY |
| | 400 - 450 | | VERTICLE AXES OF THE EGNATIA MOTORWAY |
| | 450 - 500 | | PATHE MOTORWAY |
| | 500 - 600 | | MAIN ROAD NETWORK |
| | > 600 | | IMPACT ZONE IV BOUNDARY |



DATE : 24/06/2014
 DATA SOURCE: ΕΣΥΕ 06/2014 και Eurostat 06/2014
 FILE : \\Cepheus\obs\GIS\projects_2008+\2014\prj_Vehicles\maps\mxd\GR\cars_hab.mxd



LEGEND

TOTAL NUMBER OF PRIVATE PASSENGER VEHICLES AND MOTORCYCLES PER 1,000 INHABITANTS AND PERFECTURES, 2013

- | | | | |
|--|-----------|--|--|
| | < 320 | | INTERCHANGES OF EGNATIA MOTORWAY & VERTICLE AXES |
| | 320 - 400 | | EGNATIA ODOS MOTORWAY |
| | 400 - 450 | | VERTICLE AXES OF THE EGNATIA MOTORWAY |
| | 450 - 500 | | PATHE MOTORWAY |
| | 500 - 600 | | MAIN ROAD NETWORK |
| | > 600 | | IMPACT ZONE IV BOUNDARY |

